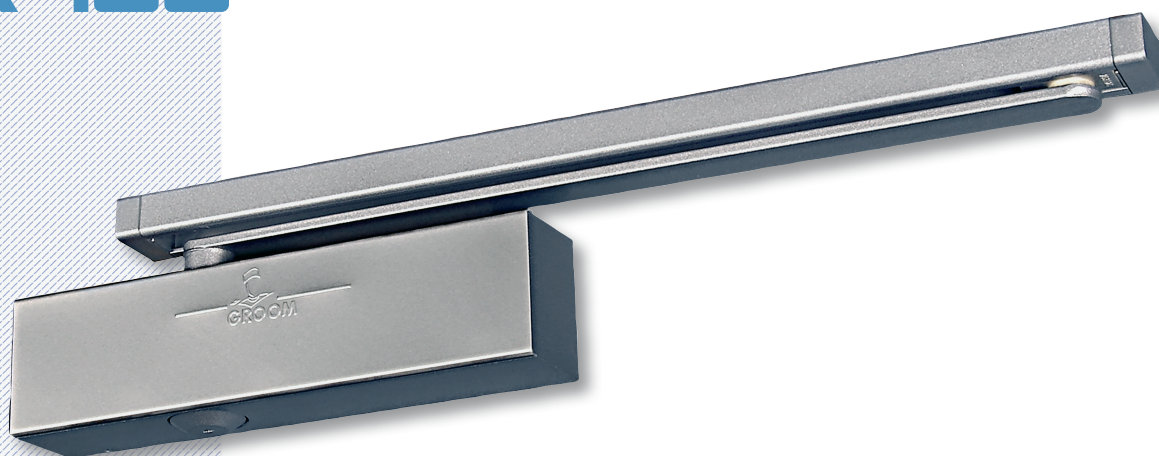


# GR400



Comfort and elegance combined with complete safety



Disability Compliance  
<50N



Firewall Certification  
EN 1634 Standard

## **GROOM** PRODUCT ADVANTAGES

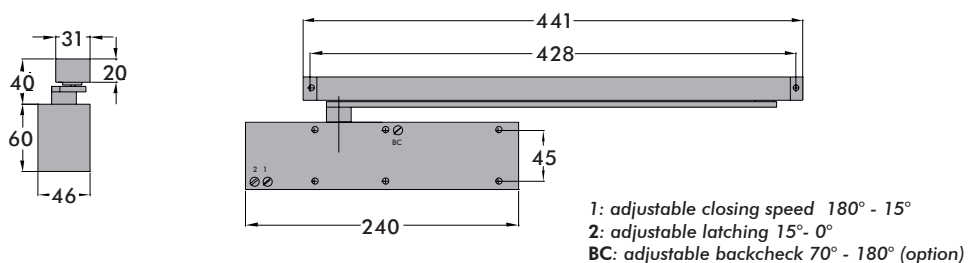
- Smooth opening thanks to its asymmetric rack and pinion technology
- Latching and closing speed adjustable by grub screw on front
- Adjustable backcheck by grub screw as an option on front
- Relief valve as a standard
- Opening range up to 180° on hinged side
- Invisible fixings and adjustable screws hidden by its clipped cover
- Aesthetic, arm without any visible fixing
- Fitting on any type of support (wood, aluminum, PVC)
- Sustainable and continuous adjustments thanks to its thermostable technology
- Optional multiple fittings

**5 YEARS WARRANTY**



TECHNICAL CHARACTERISTICS	GR400
Closing force	EN 3
Maximum dimension of the door	< 950 mm
Tested to EN 1154	YES
CE mark for construction products	YES
Disability Compliance < 50 N	YES
Fire door, anti-flame and smoke check doors	YES
Adjustable closing speed by grub screw 180° - 15°	YES
Latching adjustable by grub screw 15° - 0°	YES
Adjustable backcheck by grub screw 65° - 180°	OPTION
Adjustable delayed closing by grub screw 105° - 70°	NO
Scissor arm	NO
Slide arm	YES
Hold-open arm module (prohibited on fire doors)	OPTION
Cushioned limit stay	OPTION
Standard colors: silver, white, black	YES
RAL colors	OPTION
High Quality finishes	OPTION

## > DOOR-CLOSER DESIGN

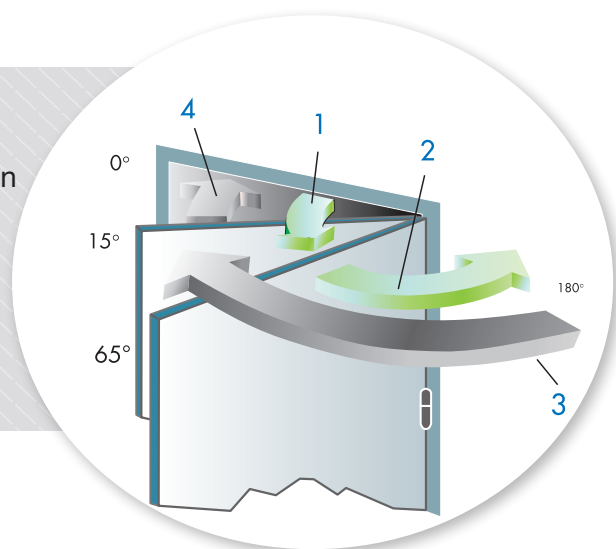


ALL ACCESSORIES ARE AVAILABLE ON PAGES 44/45

# GR400 FIXING

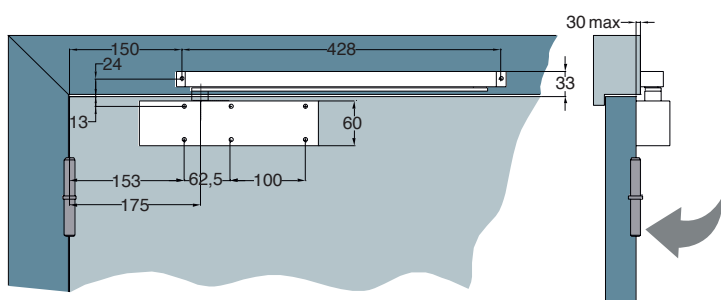
## > FUNCTIONS

- **Zone 1:** Regular opening of the door up to 180°
- **Zone 2:** Adjustable backcheck 65° - 180° as an option
- **Zone 3:** Adjustable closing speed 180° - 15°
- **Zone 4:** Adjustable latching 15° - 0°

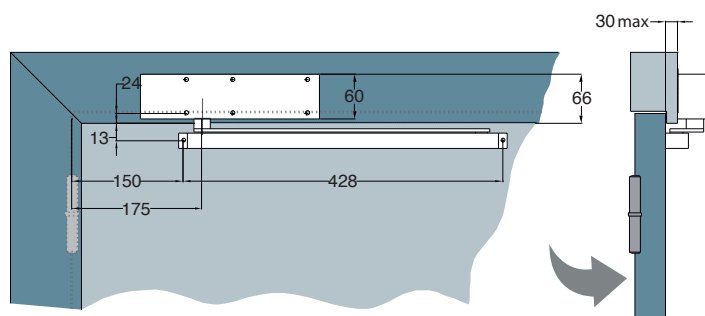


## > INSTALLATION

**Fitted on pull side body on door**

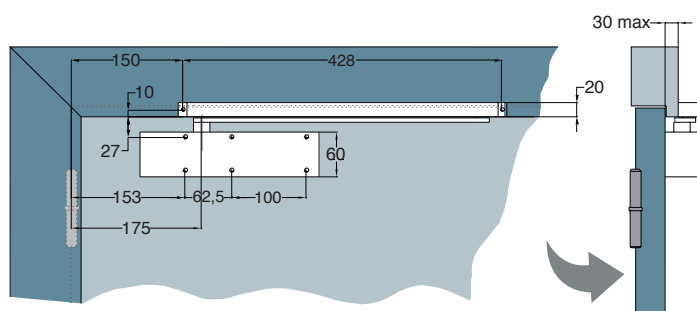


**Fitted on push side body on frame**

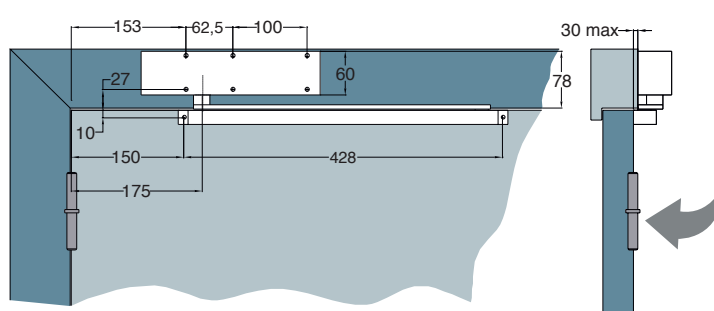


## > GR400 REVERSE

**Fitted on push side body on door**



**Fitted on pull side body on frame**



## > DESCRIPTION

GROOM door closer GR400, with symmetrical rack and pinion technology and slide arm, compliance with EN 1154, CE mark, disability compliance < 50 N.

- Force EN 3 for doors up to 950 mm width and / or 60 kg with an opening angle up to 180°.
- Closing speed and latching adjustments by grub screw on front and hidden under the cover plate.
- Adjustable backcheck by grub screw as an option on front hidden under the cover plate.
- Invisible body fixings hidden by its clipped cover.
- Pull or push side installation. Reversible, non-handed.
- Thermostable hydraulic from -20° to +40°, equipped with pressure relief valves.
- Silver, white, black, RAL finishes, high quality finishes.
- Accessories: DIN mounting plate for metal profile mounting, hold-open arm module, cushioned limit stay.

### REFERENCES

## GR400

### COMPLETE DOOR CLOSER

GR40051X	GR400 SLIDE ARM
GR40071X	GR400 BC SLIDE ARM
GR40571X	GR400 BC REVERSE SLIDE ARM

### BODY ONLY

GR40001X	GR400 BODY ONLY
GR40021X	GR400 BC BODY ONLY
GR40521X	GR400 BC REVERSE BODY ONLY

### SLIDE ARM

GR50050X	SLIDE ARM 400/450/500
GR50060X	SLIDE ARM 400/450/500 WITH HOLDE-OPEN ARM
GR509400	HOLD-OPEN ARM MODULE ONLY 400/450/500
GR509300	CUSHIONED LIMIT STAY (MECHANICAL) 400/450/500
GR50920X	SUPPORT PLATE FOR SLIDE ARM

### ACCESSORIES

GR40900X	GR400 DIN MOUNTING PLATE
GR40980X	GR400 RIGHT MOUNTING PLATE
GR40990X	ANGLED GR400 MOUNTING PLATE

### HIGH QUALITY FINISHES

GR400310	GRHF400 BODY ONLY BODY STAINLESS STEEL BRUSH
GR400315	GRHF400 BODY ONLY CHROME DESIGN
GR400318	GRHF400 BODY ONLY BRASS STYLE
GR500530	SLIDE ARM GR400 STAINLESS STEEL BRUSH
GR500540	SLIDE ARM GR400 CHROME DESIGN
GR500520	SLIDE ARM GR400 BRASS STYLE

### Code X = Finish Code

0 = RAL 9016 white

1 = silver

5 = RAL 9005 black

8 = other RAL (option)

**BC = BackCheck**